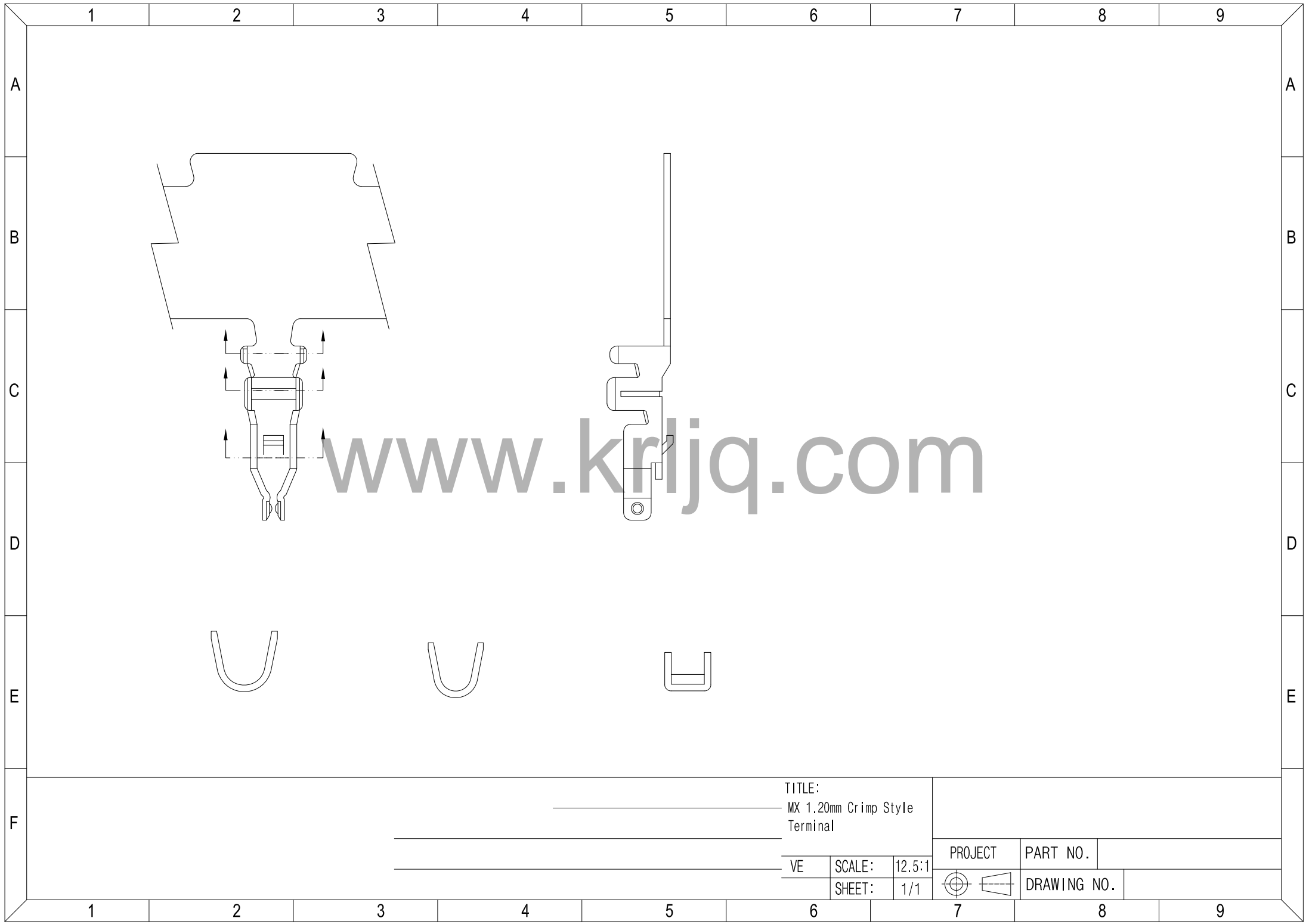


◆ SPECIFICATIONS

- Current rating: 1.5A AC, DC
- Voltage rating: 50V AC, DC
- Temperature range: -25°C ~ +85°C
- Insulation resistance: 100MΩ Min.
- Withstanding voltage: 500V AC/ minute.
- Contact resistance: 20mΩ Max.

Material: Nylon 46 UL94V-0 Black
Suitable: 1200 series Crimp Terminal

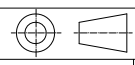


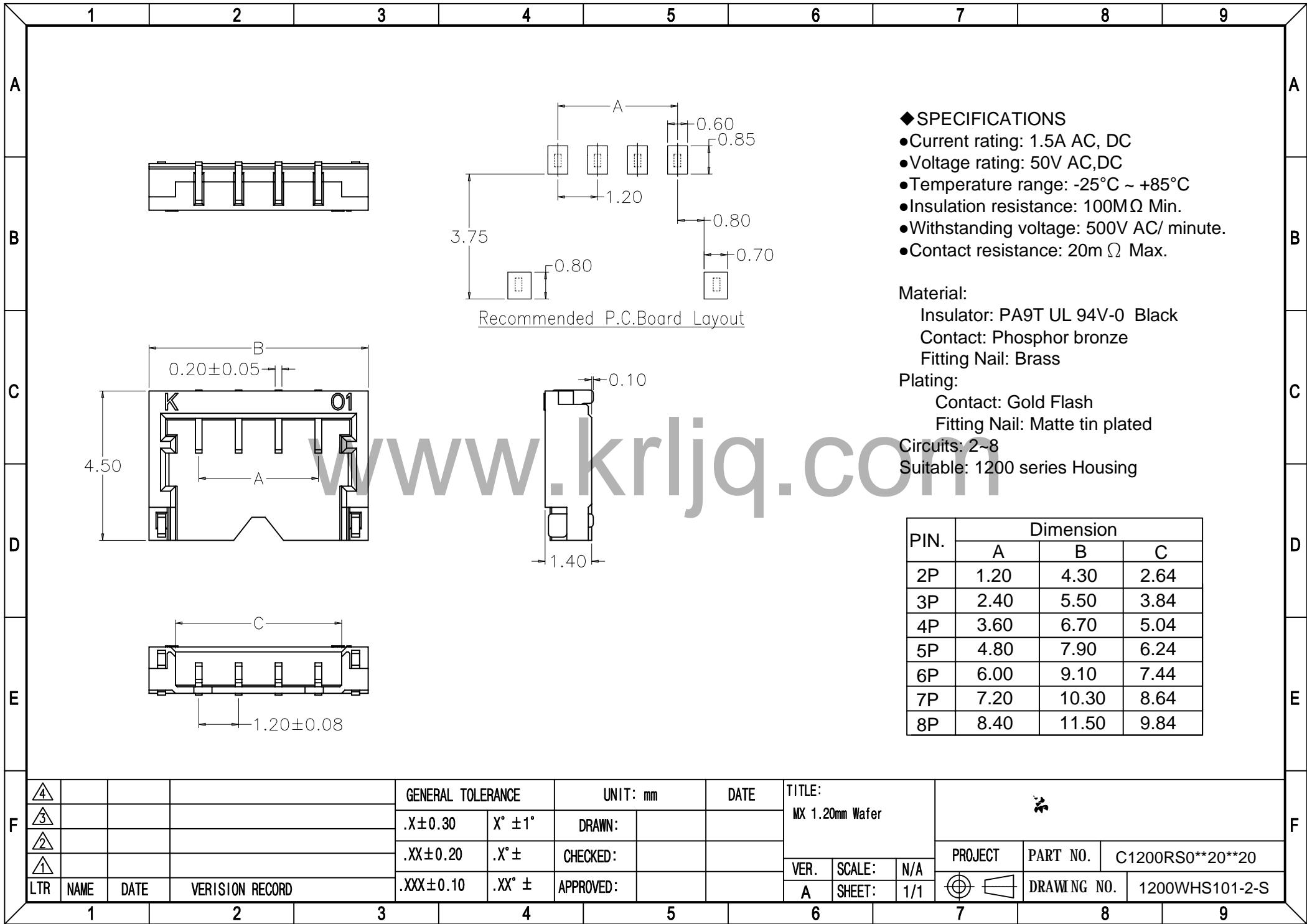
www.krljq.com

TITLE:
MX 1.20mm Crimp Style
Terminal

VE SCALE: 12.5:1
SHEET: 1/1

PROJECT	PART NO.	
DRAWING NO.		





◆ SPECIFICATIONS

- Current rating: 1.5A AC, DC
- Voltage rating: 50V AC, DC
- Temperature range: -25°C ~ +85°C
- Insulation resistance: 100MΩ Min.
- Withstanding voltage: 500V AC/ minute.
- Contact resistance: 20mΩ Max.

Material:

Insulator: PA9T UL 94V-0 Black
 Contact: Phosphor bronze
 Fitting Nail: Brass

Plating:

Contact: Gold Flash
 Fitting Nail: Matte tin plated

Circuits: 2~8

Suitable: 1200 series Housing

PIN.	Dimension		
	A	B	C
2P	1.20	4.30	2.64
3P	2.40	5.50	3.84
4P	3.60	6.70	5.04
5P	4.80	7.90	6.24
6P	6.00	9.10	7.44
7P	7.20	10.30	8.64
8P	8.40	11.50	9.84

F	④				GENERAL TOLERANCE		UNIT: mm		DATE	TITLE: MX 1.20mm Wafer		
	③				.X±0.30	X° ±1°	DRAWN:			PROJECT PART NO. C1200RS0**20**20		
	②				.XX±0.20	.X° ±	CHECKED:					
	①				.XXX±0.10	.XX° ±	APPROVED:			VER. A	SCALE: SHEET: 1/1	N/A
	LTR	NAME	DATE	VERISION RECORD								